

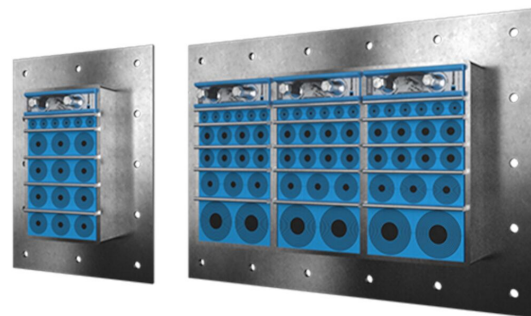


# Roxtec GHM-gennemføring

Anordning til høj kabeltæthed og store kabler.

Roxtec GHM er en letvægtskabelgennemføring, som monteres ved boltning og inkluderer en tætningsliste til tætning på konstruktionen. Rammen fås i forskellige materialer og med en enkelt eller forskellige kombinationer af åbninger. Tætningsmodulerne kan tilpasses kabler og rør af forskellig størrelse og kan bruges til indbygget reservekapacitet i gennemføringen.

- Gnaverbestandig
- Pladsbesparende



## Produktegenskaber



Brandklassificeret



Vandtæt



IP/UL NEMA

## Byggekonstruktion



Sandwich panel



EI-skabe og kabinetter



Metal

## Monteringstype



Boltning

## Normeringer og certifikater

### Brand

- A-KLASSE i henhold til IMO 2010 FTP-kode
- E/EI-klassificering i henhold til EN 13501

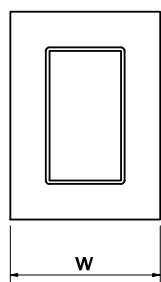
### Tæthed

- Vand: 3 bar (katastrofe)
- IP 66/67

## Rammedimensioner

mm/kg

De nedenstående rammevarianter udgør et begrænset udvalg. Du kan se hele udvalget af rammer og konfigurationer på [roxtec.com](https://www.roxtec.com).

	Title	Rammeåbninger	Pakkeareaö	Udvendige mål WxHxD	Åbningsmål w x h	Vægt	Art.-nr.
	GHM 6x1 GALV INCL TSL 15x6	1	120 x 180	252.5 x 350 x 60	147.5(+5/-5) x 245(+5/-5)	4.5	5GHM000004089
	GHM 6x2 GALV INCL TSL 15x6	2	120 x 180	383 x 350 x 60	278(+5/-5) x 245(+5/-5)	7.7	5GHM000006300
	GHM 6x3 GALV INCL TSL 15x6	3	120 x 180	513.5 x 350 x 60	408.5(+5/-5) x 245(+5/-5)	10.5	5GHM000004091
	GHM 6x1 PRIMED INCL TSL 15x6	1	120 x 180	252.5 x 350 x 60	147.5(+5/-5) x 245(+5/-5)	4.9	GHM6000000112
	GHM 6x2 PRIMED INCL TSL 15x6	2	120 x 180	383 x 350 x 60	278(+5/-5) x 245(+5/-5)	7.4	GHM6000000212
	GHM 6x3 PRIMED INCL TSL 15x6	3	120 x 180	513.5 x 350 x 60	408.5(+5/-5) x 245(+5/-5)	9.9	GHM6000000312
	GHM 6x1 AISI316 INCL TSL 15x6	1	120 x 180	252.5 x 350 x 60	147.5(+5/-5) x 245(+5/-5)	4.9	5GHM000004746
	GHM 6x2 AISI316 INCL TSL 15x6	2	120 x 180	383 x 350 x 60	278(-2) x 245	7.4	5GHM000004027
	GHM 6x3 AISI 316 INCL TSL 15x6	3	120 x 180	513.5 x 350 x 60	408.5(+5/-5) x 245(+5/-5)	9.9	5GHM000004044



# Data om tætningskomponenter

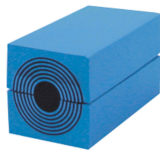
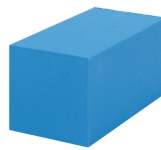
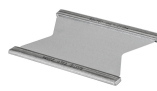
## Tætningskomponenter



Lubrikant



wedge og wedgekit

RM-modul med  
Multidiameter™RM fast  
kompensationsmodul

Stayplate



holderværktøj



tætningskit

## Tilbehør

For mer information, besøg venligst [roxtec.com](https://www.roxtec.com).

The product information provided by Roxtec does not release the purchaser of the Roxtec system, or part thereof, from the obligation to independently determine the suitability of the products for the intended process, installation and/or use.

Roxtec gives no guarantee for the Roxtec system or any part thereof and assumes no liability for any loss or damage whatsoever, whether direct, indirect, consequential, loss of profit or otherwise, occurred or caused by the Roxtec systems or installations containing components not manufactured by an authorized manufacturer and/or occurred or caused by the use of the Roxtec system in a manner or for an application other than for which the Roxtec system was designed or intended.

Roxtec expressly excludes any implied warranties of merchantability and fitness for a particular purpose and all other express or implied representations and warranties provided by statute or common law. User determines suitability of the Roxtec system for intended use and assumes all risk and liability in connection therewith. In no event shall Roxtec be liable for indirect, consequential, punitive, special, exemplary or incidental damages or losses.

The Roxtec products are offered and sold in accordance with the conditions of the Roxtec General Terms of Sales. The latest version of the Roxtec General Terms of Sales can be downloaded from <https://www.roxtec.com/en/about-us/about-roxtec/general-terms-of-sales/>

We reserve the right to make changes to the product and technical information without further notice. Any errors in print or entry are no claims for indemnity. The content of this publication is the property of Roxtec International AB and is protected by copyright.

This document was generated on: 2024-04-16